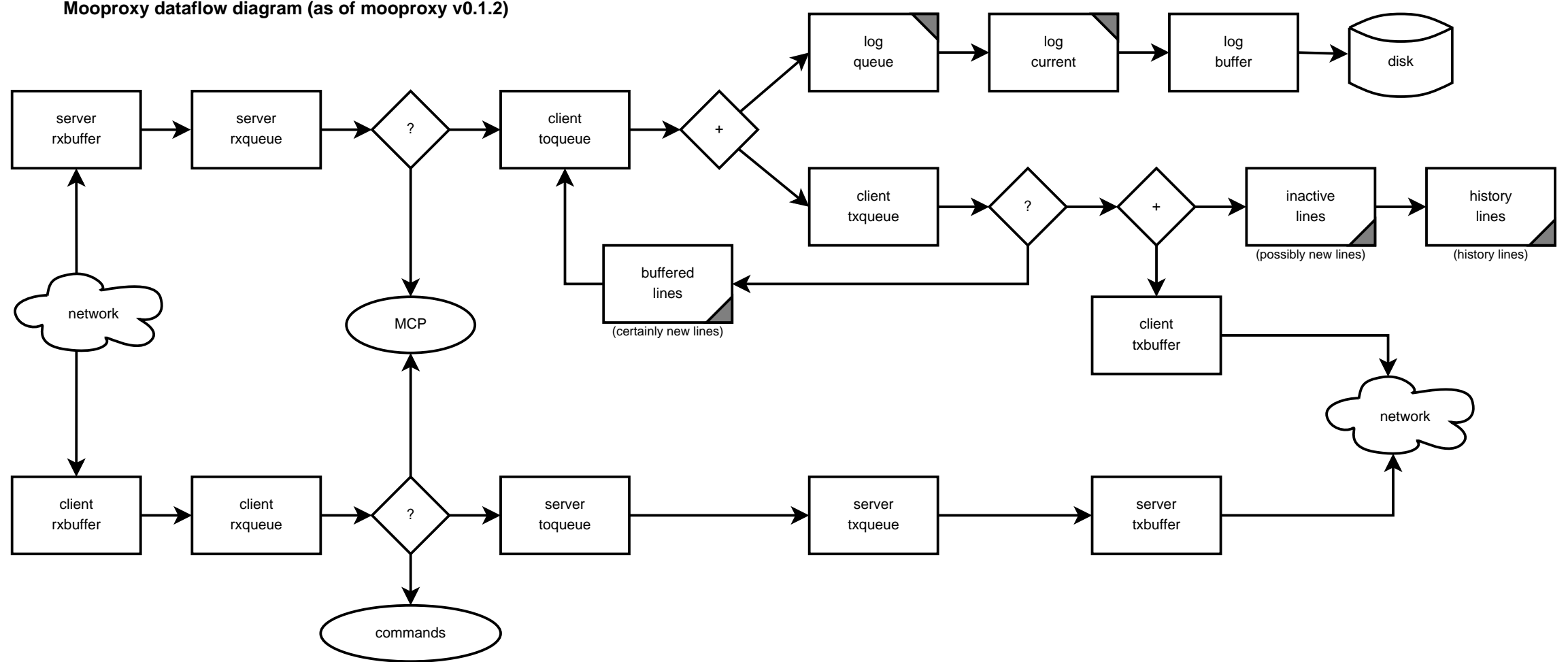


Mooproxy dataflow diagram (as of mooproxy v0.1.2)



buffer or queue



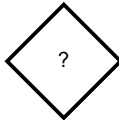
total queue  
sizes limited by  
max\_buffer\_size



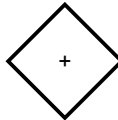
total queue  
sizes limited by  
max\_logbuffer\_size



unspecified further  
processing



switchpoint, transfers a piece  
of data to one destination



copies a piece of data  
to all destinations



direction of  
dataflow